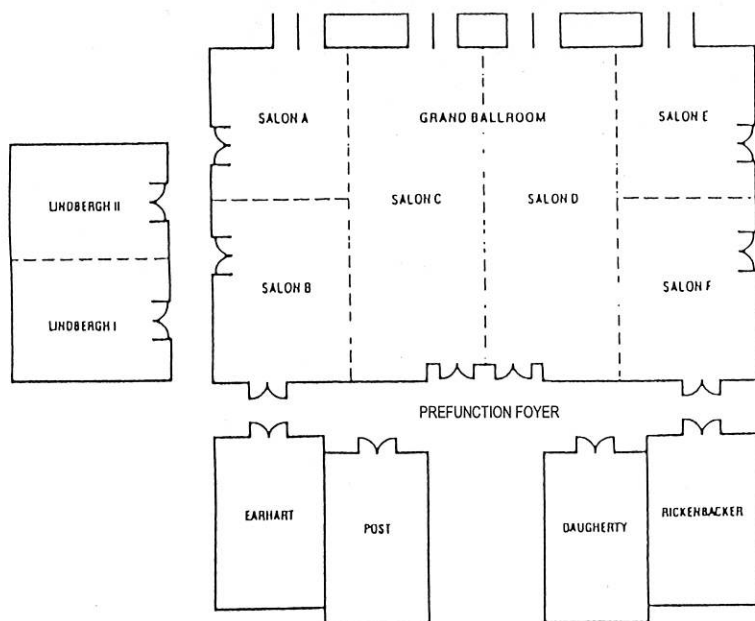


**Western Conference
of the
Association for
Asian Studies
2000**



October 6-7, 2000

**Department of
Asian and Asian American Studies
California State University, Long Beach**



Long Beach Airport Marriott Hotel

Western Conference, Association for Asian Studies

Annual Meeting October 6-7, 2000

General Information

LOCATION: All events of the meeting will be held at the Long Beach Airport Marriott Hotel, 4700 Plaza Drive, Long Beach, CA 90815

REGISTRATION: Participants may pre-register by mail or register at the meeting. Registration materials, including conference badges, receipts and tickets to functions, may be picked up at the WCAAS registration desk in the hotel foyer. Admission to all events is by conference badge only.

Registration fee:	\$35 (\$45 after September 1 st)
Graduate Student:	\$20 (\$25 after September 1 st)
Undergraduate Student:	\$5
Pre-Collegiate Teachers:	\$0 (paid by WCAAS)

PUBLISHERS BOOK EXHIBIT: Publications in the field of Asian Studies will be on display during the meeting in Salon F. The hours of display are Friday, 8:00 a.m. to 5:00 p.m., Saturday 8:00 a.m. to noon. Exhibition books will be sold at a reduced price at the close of exhibition.

BUSINESS LUNCHEON: The business luncheon will be held from 12:15 to 2:00 in the Grand Ballroom. The luncheon and speeches will occupy the first half of the meeting, from roughly 12:15 to 1:15. Matters involving voting will not begin until 1:15. All Association members, whether or not they purchase a meal ticket for the luncheon, are encouraged to attend the latter half of the meeting

FilmFest: The WCAAS FilmFest will be held Thursday, Friday and Saturday evenings. Attendance at the FilmFest is free.

MEETINGS OF THE EXECUTIVE BOARD: 8:00 p.m., Thursday, October 5th, Café Terrace; and 7:00 a.m., Saturday, October 7th, Café Terrace.

The Association for Asian Studies

Peter Duus, President, AAS, Stanford University

Western Conference, Association for Asian Studies

Executive Board, 1999-2000

Marcia Yonemoto, President
University of Colorado

Steven I. Levine
University of Montana

Yenna Wu, Past President
University of California, Riverside

Ginger Cheng-chi Hsi
University of California, Riverside

Kenneth Hammond
New Mexico State University

Arnold P. Kaminsky, Program Chair, WCAAS 2000
California State University, Long Beach

Joanna Kirkpatrick
Boise, Idaho

Chia-lin Pao Tao, Treasurer
University of Arizona

Eric Hyer
Brigham Young University

L. Shelton Woods, Editor
*Journal of the Western Conference
of the Association for Asian Studies*
Boise State University

Marilyn A. Levine, COC Representative and Executive Secretary
Lewis-Clark State College

Program Committee, CSULB

Arnold P. Kaminsky, Chair
John N. Tsuchida
Linda España-Maram
Yoko Pusavat
Hsin-Sheng C. Kao
San-pao Li

Tim Xie, Book Exhibition Coordinator
Jeff Winters, Webmaster
Yasuko Koshiyama, Entertainment Coordinator

Acknowledgements

Association for Asian Studies
California State University, Long Beach
Office of the President
Office of the Provost and Sr. Vice President for
Academic Affairs
College of Liberal Arts
Department of Asian and Asian American
Studies
Center for Southeast Asian Studies
Center for Asian and Pacific American Studies
Community Youth Orchestra of Southern California
Philippine Airlines
Orange County Office of Education

National Endowment for the Humanities
Global Alliance
Pilipino American Coalition (CSULB)
PAC Modern (CSULB)
Yanase Landscaping
Fujii Enterprises
Asia Society, Southern California Center
Los Angeles County Office of Education
Long Beach Unified School District
Long Beach Airport Marriott Hotel
Office of the Director, Cultural Division, TECO
Yoko Awaya Koto Ensemble
The Japanese Foundation & Language Center in Los Angeles

The cover design, which represents uniqueness as human birth, is based on the Tibetan calligraphy of P. N. Dhumkhang on display at the Indigo Gallery, Katmandu, Nepal.

WCAAS FilmFest

THURSDAY, OCTOBER 5, 2000, 7:30 - 10:00 P.M.
Overstay (Ann Kaneko, Director 1999)

Salon AB

Waves of international migrants from Asia, the Middle East, South America and Africa came to Japan during the prosperous late 1980s and early 1990s. Among these "newcomers," undocumented workers tripled from approximately 100,000 in 1990 to 300,000 in 1992. *Overstay* explores the lives of migrant workers from Iran, Pakistan, Peru and the Philippines who have overstayed their visas in contemporary Japan. The film focuses on their reasons for immigration to Japan, the process of adjusting to what is arguably an insular and traditional society, their present status as undocumented immigrants, and their plans for survival in the future.

In light of the recent economic crisis, the situation for foreign migrant workers in Japan has become more desperate. Unemployment has risen, and the Japanese government has stepped up immigration raids. *Overstay* probes the crucial legal, cultural, racial, and class dimensions associated with the international migration of labor in a global economy.

FRIDAY, OCTOBER 6, 2000, 7:00 - 10:00 P.M.
Three Seasons (Zoe Bui, Lead Actress, 1999)

Lindbergh

In the luminous, *Three Seasons*, twenty-six year old director Tony Bui presents the new face of Vietnam, providing a resonant and fascinating window into the last moments of an irrevocably changing culture. Told from the perspective of four characters passed over by the "improvements" of Western progress, the film is a touching portrayal of characters that lead very different lives but share a remarkably common experience. *Three Seasons* is also groundbreaking historically, as the first American film shot in Vietnam since the war, and the first to be acted in Vietnamese by Vietnamese actors.

Three Seasons was the winner of three top awards at the 1999 Sundance Film Festival: The Grand Jury Prize for Best Dramatic Feature, the Audience Award, and the Cinematography Award.

SATURDAY, OCTOBER 7, 2000, 6:30 - 10:00 P.M.
José Rizal (Marilou Diaz-Abaya, Director, 1999)

Lindbergh

José Rizal (1861-1896) is the Philippine national hero. He was a physician, poet, novelist, linguist, and scholar. In 1887, he published his first novel, *Noli Me Tangere*, which criticized the Spanish colonial government and clergy in the Philippines. Rizal's nationalist stance and rhetoric led to his imprisonment and eventual execution by the Spanish. His death triggered the Philippine Revolution against Spain that lasted from 1896 to 1898.

José Rizal explores the complex issues associated with imperialism, nationalism, and revolution. The film broke all box-office records in the Philippines and won 17 out of 18 awards, including "Best Picture," in the Metro Manila Film Festival.

Schedule of Events

Thursday, October 5th

6:00-7:30 pm	Preregistration	Poolside, LB Marriott
6:00-7:30 pm	Opening Reception Welcome: John N. Tsuchida, Chair Department of Asian and Asian American Studies	Poolside, LB Marriott
	Co-sponsor: The Japan Foundation & Language Center in Los Angeles	
6:30 pm	Community Youth Orchestra of Southern California	
	Introduction: San-pao Li	
7:30-10:00 pm	WCAAS FilmFest: <i>Overstay</i> Director: Ann Kaneko	Salon AB
8:00 pm	WCAAS Executive Board Meeting	Café Terrace

Friday, October 6th

		Long Beach Marriot
7:00 am-5:00 pm	Registration	
8:00-9:00 am	Session I (Panels 1-5)	
9:00-9:10 am	Break	
9:10-10:40 am	Session II (Panels 6-12)	
10:40-10:50 am	Break	
10:50 am-12:15 pm	Session III (Panels 13-19)	
12:15-2:00 pm	Luncheon and Business Meeting Welcome: Robert C. Maxson, President, California State University, Long Beach Speaker: Peter Duus, President, Association for Asian Studies, Stanford University	

Friday, October 6th (continued)

2:00-3:30 pm	Session IV (Panels 20-26)	
3:30-3:40 pm	Break	
3:40-5:00 pm	Session V (Panels 27-33)	
5:00-7:00 pm	University President's Reception Welcome: Karl W.E. Anatol, Provost and Sr. Vice President for Academic Affairs, California State University, Long Beach	Grand Ballroom
	Performances: Yoko Awaya Koto Ensemble Pilipino American Coalition and PAC Modern	
7:00-10:00	WCAAS FilmFest: <i>Three Seasons</i> Lead Actress: Zoe Bui	Lindbergh

Saturday, October 7th

		Long Beach Marriot
7:00-8:00 am	WCAAS Executive Board Meeting	Café Terrace
7:00-12:00 pm	Registration	
8:00-9:00 am	Session VI (Panels 34-39)	
9:00-9:10 am	Break	
9:10-10:40 am	Session VII (Panels 40-46)	
10:40-10:50 am	Break	
10:50 am-12:00 pm	Session VIII (Panels 47-53)	
12:00-1:00 pm	Lunch Break	
1:00-2:30 pm	Session IX (Panels 54-60)	
2:30-2:40 pm	Break	
2:40-4:15 pm	Session X (Panels 61-67)	
6:30-10:00 pm	WCAAS FilmFest: <i>José Rizal</i> Director: Marilou Diaz-Abaya	Lindbergh

Panel 1 AESTHETICS AND ETHICS IN SOUTH ASIA Lindbergh II

CHAIR: Joseph Prabhu, California State University, Los Angeles

Aesthetic Aspects of South Asian Moral Thinking
Maria Hibbets, California State University, Long Beach

Panegyrics and Fame in Sanskrit Culture
Steven Heim, University of Chicago

DISCUSSANT: Joseph Prabhu

Panel 2 JAPANESE BUDDHISM Earhart

CHAIR: Jeffrey Broughton, California State University, Long Beach

Eizon's 1269 Hannya-ji Monju Bosatsu Zôryû Ganmon:
The Symbolic and Material Economy of a Votive Text
David Quinter, Stanford University

Zenmyo's Presence and Transformation in the Gisho Scrolls of the Kagon Engi Emaki
Monika Dix, University of British Columbia

DISCUSSANT: Jeffrey Broughton

Panel 3 CONTEMPORARY APPROACHES TO LATE
PRE-MODERN EAST ASIAN PAINTING Post

CHAIR: Ingrid Aall, California State University, Long Beach

*From Daughter to Goddess: Alchemical Transformation of the Primordial
Sovereign of the Azure Cloud in the Late Qing Painting*
Xun Liu, University of Southern California

The Neo-Confucian Horizon of Wen-jen-hua Landscape
Harvey Stupler, Long Beach City College

*Examination of the Theme of Play in the Teinai yurakuzu Sub-genre
of Late-Sixteenth and Early-Seventeenth Century Japanese Painting*
Susan Lee, University of Michigan

DISCUSSANT: Ingrid Aall

CHAIR: George Scott, California State University, Long Beach

*Constructing "Authentic" Traditions in the Academy:
Scholarly Implications of Inventing the "Native"*
Lisa Michie Itagaki, University of California, Los Angeles

*Envisioning Asian America in Gary Pak's A Ricepaper Airplane:
Revisiting Asian American Literary Studies*
Lynn Mie Itagaki, University of California, Los Angeles

DISCUSSANT: George Scott

Panel 5 WOMEN IN CHINESE AND JAPANESE
LITERATURE: A QUESTION OF IMAGE Rickenbacker

CHAIR: Christopher Bolton, University of California, Riverside

Women's Voice in Japanese and Chinese Classical Poetry
Rokuo Tanaka, University of Hawaii, Manoa

*After the Electra Complex in the Pygmalion Motif:
A Rape of The Feminine Subjectivity*
Ya-chen Chen, Columbia University

DISCUSSANT: Christopher Bolton

Panel 6 LAY RITUALS IN THE HINDU, JEWISH AND SHIA COMMUNITIES Lindbergh I

CHAIR: Stanley Wolpert, University of California, Los Angeles

Private Pujas in Public Spaces: Lay Rituals in Tamil Temples
Sita Anantha Raman, Santa Clara University

Female-Made Religious Spaces: Shi'a Women's Rituals in Iran, Pakistan and the U.S.
Mary Hegland, San Jose State University

Jewish Rituals in India
Brenda Ness, Santa Monica College

DISCUSSANTS: Glenn Yocum, Whittier College
Emilie Olson, Whittier College

Panel 7 THE PHILIPPINE RADICAL TRADITION Lindbergh II

CHAIR: Linda España-Maram, California State University, Long Beach

1745 Uprising: The Beginning of the Philippine Revolution
Damon Woods, University of California, Irvine

An Examination of the Philosophical Basis of Philippine Communism
Priscilla Tacujan, Claremont Graduate University

The Ideas of the Philippine Revolution as Reflected in Selected Literary Works
Nenita Pambid Domingo, Loyola Marymount University

DISCUSSANT: Elizabeth Pastores-Palffy, Union Institute

Panel 8 JAPANESE WAR CRIMES Earhart

CHAIR: John N. Tsuchida, California State University, Long Beach

Grassroots Campaigns to Seek Reparations for Former "Comfort Women" in Asia
Kim Yonhi, Study Group on the Comfort Women's Issues

Japanese Germ Warfare
Sheldon Harris, California State University, Northridge

Korean Comfort Women
Sarah Soh, San Francisco State University

DISCUSSANT: Ignatius Ding, Global Alliance

Panel 9 VISUAL CULTURES Post

CHAIR: Ingrid Aall, California State University, Long Beach

Modernity and Movie Theater Etiquette in Early Twentieth Century China
Zhiwei Xiao, California State University, San Marcos

Indonesia's Reform Movement: Some Op-Art Perspectives
Richard Ostrom, California State University, Chico

Images of Buddhist Nuns in the Mass Media: A Case Study of Newspaper Representation
Meei-Hwa Chern, Institute of Ethnology, Academia Sinica (Taiwan)

DISCUSSANT: Ingrid Aall

Panel 10 EDUCATION IN JAPAN Daugherty

CHAIR: Akira Miyazaki, California State University, Long Beach

Why Kenji Can't Read
Kathryn Ragsdale, University of California, Irvine

Internationalization of Japanese Education: The Experience of a Minority Community
Yuko Okubo, University of California, Berkeley

Japanese Students' Perceived Need for Communicative English and Their Perceived Proficiency Levels
Takanori Mita, Moorhead State University

Perceived Importance of English Amongst Osaka Students: A Preliminary Analysis
Cherylynn Bassani, University of Calgary

DISCUSSANT: Akira Miyazaki

Panel 11 DOMESTIC FACTORS IN ASIAN GLOBALIZATION Rickenbacker

CHAIR: Otto Schnepf, University of Southern California

The Asian Globalization Debate: Prosperity or Poverty?
Luis Ma. R. Calingo, California State University, Long Beach

Hong Kong in the Globalization Process: A View from Professional Immigration Flows
Tse-Mei Chen, State University of New York, Buffalo

Agents for the Global Market Culture: Advertising and the Promotion of the Modern Consumption Ethos in Singapore, 1960-1980
Frank Chua, Mansfield University

Inequality, Ideology, Autarky and Structural Change: The Biological Standard of Living in Japan Between the World Wars
Carl Mosk, University of Victoria

DISCUSSANT: Otto Schnepf

NEW WAYS OF SERVICE: EAST ASIAN
COLLECTIONS AT THE DAWN OF A NEW CENTURY

Salon E

CHAIR: Gail King, Brigham Young University

Changing Research Methods in Asian Studies
Zhijia Shen, University of Colorado

Korean Collections: Cooperation and Web Resource Guides
Joy Kim, University of Southern California

The East Asian Scholars Electronic Reference Desk
Gail King, Brigham Young University

DISCUSSION: The Audience

BREAK

10:40-10:50am

FRIDAY, OCTOBER 6th
SESSION III

10:50-12:15pm

FOREIGN POLICY, CULTURAL VALUES AND
STATE FORMATION IN EAST ASIA

Lindbergh I

CHAIR: Gordon Harrington, Weber State University

Banking and Trade in Guangdong Province, 1949-1979
Perry Ritenour, Georgetown University

China's Quest for Multipolar World Order: A Mere Adjustment or a New Start?
Jae-Cheol Kim, Catholic University of Korea

*Japan's Changing Perceptions of Cultural Interchange in The Post-Cold War Era:
A Comment on the Advisory Committee's Report to Prime Minister Hata, June 1994*
B. Winston Kahn, Arizona State University

DISCUSSANT: Gordon Harrington

THE CCP, KMT AND INTELLIGENCE
OPERATIONS IN WORLD WAR II

Lindbergh II

CHAIR: Jonathan Porter, University of New Mexico

Communist-Puppet Collaboration in Occupied China: Pan Hannian and Li Shiqun, 1939-1943
Joseph K.S. Yick, Southwest Texas State University

Chen Gongbo and the Nanjing Collaborative Government
Jianye Chen, Prairie View A&M University

"Liu Pin" and the British: The World War II Misadventures of a Tai Li Operative
E. Bruce Reynolds, San Jose State University

DISCUSSANT: Stephen R. MacKinnon, Arizona State University

CHAIR: Tim Xie, California State University, Long Beach

Language Education and Ethnic Identity
Ariel Kim, University of California, Los Angeles

*Error Analysis of Japanese (as a Second Language) Learners' Spoken Output:
Focusing on the Process of Acquiring Advanced Japanese*
Hiroshi Matsumoto, Natural Language Group, Microsoft

Vietnamese Bilingual Instructional Assistants: Who Are You?
Trangdai Tran, California State University, Fullerton

Strategic Language Instruction in Chinese
Kylie Hsu, California State University, Los Angeles

DISCUSSANT: Shu-jen Yen, California State University, Long Beach

CHAIR: Kendall H. Brown, California State University, Long Beach

The Establishment and the War Effort: Uemura Shoen and Umehara Ryuzaburo
Donald McCallum, University of California, Los Angeles

Fujita Tsuguji: The Euphoria of War
Bert Winther-Tamaki, University of California, Irvine

Product and Process: Patronage and Function of War Painting
Kendall H. Brown, California State University, Long Beach

DISCUSSANT: Samuel Yamashita, Pomona College

CHAIR: Glenn Webb, Pepperdine University

*Evolution of Dual-Language and Dual-Identity: Minority Language Maintenance
and Identity Formation of Japanese-Canadian Youths*
Hitomi Oketani-Lobbezoo, Eastern Michigan University

*Japanization through Americanization: Acculturation of Shin-Issei,
Post War Japanese Immigrants in the United States*
Yasuko Koshiyama, California State University, Long Beach

Consuming J-Town: Japanese American Community and Retail Development
Stacey Hirose, University of California, Los Angeles

DISCUSSANT: Gary Kawaguchi, California State University, Dominguez Hills

CHAIR: Chia-lin Pao Tao, University of Arizona

Anti-Orientalism and Postism in Contemporary Chinese Studies
Philip F. Williams, Arizona State University

Postcolonialism and Mo Yan's Fiction
Yenna Wu, University of California, Riverside

Recent Debates on Postmodernism: China's Future and Chinese History
Josephine Chiu-Duke, University of British Columbia

Western Postmodern Parochialism and Asian Needs
Michael S. Duke, University of British Columbia

DISCUSSANT: Chia-lin Pao Tao

CHAIR: Rebecca B. Aiken, University of California, Los Angeles

PANELISTS:

John D'Amicantonio, California State University, Long Beach
Rebecca B. Aiken, University of California, Los Angeles
Anne Frank, University of California, Irvine
Robyn A. Paynter, University of Oregon

DISCUSSION: The Audience

Welcoming Remarks:
Robert C. Maxson, President,
California State University, Long Beach

WCAAS Business Meeting:
Marilyn A. Levine, Executive Secretary, WCAAS

Lifetime Achievement Awards:
Stephen R. MacKinnon, Arizona State University
Kai-Ho Mah, Colorado State University

presented by: Frank Conlon and Jonathan Porter

PRESIDENTIAL ADDRESS:

Introduction:
Arnold P. Kaminsky, California State University, Long Beach

Remembering the Great East Asia War
Peter Duus, Stanford University
President, Association for Asian Studies

Panel 20 **MILITARY THEMES IN CHINESE HISTORY** Lindbergh I

CHAIR: Stephen R. MacKinnon, Arizona State University

Constellations of War-Zhentu and Military Thought in Mid-Imperial China
Marcia A. Butler, Cornell University

Sichuan Women and the Anti-Japanese War
Shen Wei, Arizona State University

Working Above Ground: The New Fourth Army and Shanghai, 1937-39
Allison Rottmann, University of California, Berkeley

DISCUSSANT: Stephen R. MacKinnon

Panel 21 **JAPAN AND THE UNITED STATES:
IMMIGRATION AND DIPLOMACY TO 1924** Lindbergh II

CHAIR: Sudershan Chawla, California State University, Long Beach

*The "Unequal Treaties" and the American Dekasegi of Japanese Laborers:
Reasons for Belated and Ineffectual Actions of the Meiji Government*
Yasuo Sakata, Osaka Gakuin University

*The "Grave Consequences" of the Hanihara Note: The Political Reason
Behind the Enactment of the 1924 Japanese Exclusion Act (Hainichi-Iminho)
and Its Impact Upon United States-Japan Relations*
Tosh Minohara, Kobe University

The 1924 Immigration Act and Its Impact on Japanese Immigration to Brazil
John N. Tsuchida, California State University, Long Beach

DISCUSSANT: Lloyd Inui, Japanese American National Museum

Panel 22 **LAW, SCIENCE AND THE ENVIRONMENT
IN COLONIAL INDIA** Earhart

CHAIR: Seymour Scheinberg, California State University, Fullerton

*Nature, Culture and the Creation of "Public" Space:
A Historical Perspective on the Schoolpaneshwar Wildlife Sanctuary*
Judy Whitehead, University of Lethbridge

*"Quite Apart from Any Question of Vice": Adjudicating Family, Property,
and Legitimacy in the Colonial Bombay High Court*
Rachel Sturman, University of California, Davis

DISCUSSANT: Frank Conlon, University of Washington

Panel 23 **CLASSICAL AND COMPARATIVE CHINESE LITERATURE** Post

CHAIR: Qingyun Wu, California State University, Los Angeles

*A Study in Yuan Mei's Narrative Poetry "Ballad of the Tiger's Mouth": An Exploration
to the Transformation of the Narrative Tradition in Chinese Narrative Poetry*
Tsung-Cheng Lin, University of British Columbia

The Unusual Arrangement of the Narrative and the Role of Chinese Intellectuals in Judicial Affairs
Teresa Chi-Ching Sun, California State University, Long Beach

Chuang Tzu: The Evolution of a Taoist Classic
Brian Hoffert, North Central College

DISCUSSANT: Qingyun Wu

Panel 24 **HIV/AIDS IN ASIA (ROUNDTABLE)** Daugherty

CHAIR: Roger Detels, University of California, Los Angeles

Thailand
Vincent Del Casino, California State University, Long Beach

Cambodia
Vonthanak Saphonn, UCLA/AIDS Surveillance Program, Cambodia

Vietnam
Ha Thu Dinh, UCLA/Institution for Women and Children, Hanoi

Indonesia
Pandu Riono, UCLA/University of Indonesia, Depok

India
Alok Deb, UCLA/Indian Council of Medical Research, Calcutta

China
Ji Guoping, UCLA/Maternal Child Institute, Hesei

DISCUSSION: The Audience

Panel 25 **THE ELECTRONIC CULTURAL ATLAS
INITIATIVE** Rickenbacker

CHAIR: Cavarlee Cary, University of California, Berkeley

Asian Sacred Sites Project
William Powell, University of California, Santa Barbara

The Center for Shinto Studies' Textual and Visual Archives
John Nelson, University of San Francisco

The Chinese Biographical Database-Demonstration of a Scholarly Moderated Database
Marilyn A. Levine, Lewis-Clark State College

ECAL Database Model for Sasanian Seals
Ruth Mostern, University of California, Berkeley

DISCUSSANT: Karen Kemp, University of Redlands

Panel 26 **SYMPOSIUM ON HERITAGE JAPANESE
LANGUAGE EDUCATION RESEARCH (PART I)** Salon E

KEYNOTE ADDRESS

Basic Heritage Language Education Data
Kazuko Nakajima, University of Toronto

CHAIR: Hiroko Kataoka, California State University, Long Beach

Masako Douglas, University of California, Los Angeles
Hiroko Furuyama, Japan Foundation Language Center
Toshiko Kishimoto, Clemson University
Kimi Kondo, University of Hawaii at Manoa
Nariyo Kono, University of Arizona
Yasuko Koshiyama, California State University, Long Beach
Hitomi Oketani-Lobbezoo, Eastern Michigan University
Yoko Pusavat, California State University, Long Beach
Setsue Shibata, California State University, Fullerton

BREAK **3:30-3:40pm**

Panel 27 **GENDER AND SEXUALITY IN EAST ASIA** Lindbergh I

CHAIR: Philippa Levine, University of Southern California

Strategic Universalism: Global Articulations of Chinese Male Homosexuality
James Tobias, University of Southern California

"Missionary Temptations" and Gendered Evangelicalism in Korea
Hyaeweol Choi, Arizona State University

Gender Differentiation: Changing Roles of Chinese Peasant Women
Mary J. Thompson, Brigham Young University

DISCUSSANT: Philippa Levine

Panel 28 **NUCLEAR AND SECURITY ISSUES IN ASIA (ROUNDTABLE)** Lindbergh II

CHAIR: Damodar R. SarDesai, University of California, Los Angeles

Pakistan

Neil Joeck, Lawrence Livermore National Laboratory, University of California

India

David J. Karl, Pacific Council on International Policy

China

Yuan Jing-dong, Monterey Institute for International Studies

Korea

Yong-sup Han, Rand Corporation/Korean National Defense University

Japan

Peter Berton, University of Southern California

Southeast Asia

David Elliott, Pomona College

DISCUSSION: The Audience

Panel 29 **VIETNAMESE HISTORY AND POLITICS** Earhart

CHAIR: Alain G. Marsot, California State University, Long Beach

Tay Son (Tyson, Taixones): Giving a Name to Rebellion in 18th Century Viet Nam
George Dutton, University of Washington

Literacy and Vietnamese Women's Re-evaluation of Gender Roles in the 20th Century
L.H. Phan-Nhu-Hien, University of California, Riverside

The Struggle for Cambodia: China-Vietnam-Soviet Relations After the 1978 Invasion
Haco Hoang, Boston University

DISCUSSANT: Cao Duong Pham, University of California, Irvine

Panel 30 **PRC CINEMA: THE FIRST DECADE** Post

CHAIR: Stanley Rosen, University of Southern California

Taming the Untamable: The City Id and the National Superego
Sun Shaoyi, University of Southern California

PRC Societal Changes as Seen in the Cinema, 1949-1959
Wei Huiying, Weber State University

Cinema in the PRC, 1949-1957: A Post-Cold War Survey
Greg Lewis, Weber State University

DISCUSSANT: Stanley Rosen

Panel 31 **JAPAN AND WESTERN AESTHETICS AND ETHICS CONVERGENCE AND DIVERGENCE** Daugherty

CHAIR: Paul Tang, California State University, Long Beach

Subversive Subject: Sakaguchi Ango and Japanese Cultural Identity
Isamu Fukuchi, University of Michigan

Shine and Shadow: A Critique of Heidegger's Ontology of the Work of Art in "Light" of the Japanese Aesthetic Category of Yugen
Bradley Park, University of Hawaii at Monoa

Fudo, Climate and Culture: A Reconsideration of Watsuji Tetsuro
Edgar A. Weir, University of Nevada, Las Vegas

DISCUSSANT: Paul Kjellberg, Whittier College

**DEVIANCE, ORTHODOXY AND THE BODY:
QUESTIONING MODERN INTERPRETATION OF
MEDIEVAL JAPANESE HISTORIES**

Rickenbacker

CHAIR: Joe Parker, Pitzer College

I Know It When I See It? Genitals and Medieval Scatology
Andrew Goble, University of Oregon

Writing Cultural Struggle Past and Present: Orthodoxy
Joe Parker, Pitzer College

Beyond the Pale? Sexual Transgression and Deviance in Medieval Japan
Janet R. Goodwin, Independent Scholar

DISCUSSANT: William Bodiford, University of California, Los Angeles

**SAMRITECHAK: CLASSICAL KHMER DANCE AND
WILLIAM SHAKESPEARE'S OTHELLO (ROUNDTABLE)**

Salon E

CHAIR: Caverlee Cary, University of California, Berkeley

Sophiline Cheam Shapiro, *Samritechak* Choreographer, Danse Celeste/
University of California, Los Angeles

Teri Shaffer Yamada, California State University, Long Beach

Robert N. Watson, University of California, Los Angeles

Toni Samantha Phim, University of California, Berkeley

DISCUSSION: The Audience

**FRIDAY, OCTOBER 6th
UNIVERSITY PRESIDENT'S RECEPTION**

5:00-7:00pm
Grand Ballroom

Welcoming Remarks:

Karl W.E. Anatol, Provost and Senior Vice President,
California State University, Long Beach

Hors d'oeuvres and no-host bar

Entertainment:

Yoko Awaya Koto Ensemble
Pilipino American Coalition and
PAC Modern Performances

Panel 34 ENVIRONMENTAL AND HEALTH ISSUES Lindbergh I

CHAIR: Veronica Acosta-Duprez, California State University, Long Beach

*Comparative Study on the Trend and Pattern of Lung Cancer
in the Chinese Diaspora: Age-Period-Cohort Analysis*
Richard Barrett, University of Illinois at Chicago
Wei Wang, University of Illinois at Chicago

Mind Matters: The Interdisciplinarity of Traditional Chinese Mental Medicine
Da'an Pan, California State Polytechnic University, Pomona

DISCUSSANT: Sarath Gunitilake, California State University, Long Beach

Panel 35 ASIAN STUDIES IN THE CURRICULUM: NEW AVENUE, NEW APPROACHES Lindbergh II

CHAIR: Marilyn A. Levine, Lewis-Clark State College

The Education Partnership as a Strategy for Advancing Asian Studies in the K-12
Alison M. Kaminsky, Long Beach Unified School District

Connectivity as Collaboration: New Approaches to Pedagogy and Research
Marilyn A. Levine, Lewis-Clark State College

Working Inside the Box: An Artifact Approach to Teaching Chinese Culture K-8
Steven I. Levine, University of Montana

DISCUSSION: The Audience

Panel 36 PARENTING AND ACADEMIC ACHIEVEMENT Earhart

CHAIR: Steven Lee, California State University, Dominguez Hills

Achievement: Lao Youth in Hawaii and Cambodian Youth in California
Terpsi Tan, Education Consultant: Community Relations and Education

The Characteristics of Academic Achievement Among Asian-American Students in Texas
Eun-Hee Koo, Hope International University

Implications of Culture and Ethnicity in the Effect of Korean American Parenting
Eunai Shrake, University of California, Irvine

DISCUSSANT: Steven Lee

Panel 37 CINEMA IN INDIA: CULTURAL ICONS AND PUBLIC PARTICIPATION Post

CHAIR: Ram Mohun Roy, California State University, Northridge

Experiencing Cinema: Participation, Performance and Public Spectacle
Lakshmi Srinivas, University of California, Los Angeles

Popular Films of India: An Escape or A Portrayal of Cultural Icons of Indian Society?
Sunita Peacock, Slippery Rock University

DISCUSSANT: Namika Raby, California State University, Long Beach

Panel 38 RELIGIOUS REVIVAL, SYMBOLISM AND THE STATE Daugherty

CHAIR: Bradley K. Hawkins, California State University, Long Beach

*The Socio-political Formation of the Religious Revival in Modern Asia:
A Comparison Between Taiwan and Malaysia*
Yuanlin Tsai, Nanhua University (Taiwan)

Female Dancers in Bali: From Temple to the Stage
Maria Talamantes, University of California, Riverside

The Apotheosis of José Rizal as God the Son Among the Millenary Groups in the Philippines
Nenita Pambid Domingo, Loyola Marymount University

DISCUSSANTS: Jacqueline Armijo-Hussein, Stanford University
Bradley K. Hawkins

Panel 39 POPULAR CULTURE IN THE CONSTRUCTION OF NATIONAL IDEOLOGY Rickenbacker

CHAIR: Adrian Novotny, Long Beach City College

Memory and Melancholia: Japanese War Guilt and the Politics of Remembering
Michael Sugimoto, University of Puget Sound

Chinese Songs During the Sino-Japanese War
Kai-Ho Mah, Colorado State University

*The Reinvention of Femininity in Japan: The Amaterasu Image as the Nation's
Mother through the Spectacle of the Nagano Olympic Opening Ceremony*
Taeko Teshima, University of Arizona

DISCUSSANT: Adrian Novotny

BREAK

9:00-9:10am

Panel 40 THE AMERICAN COLONIAL RECORD IN THE PHILIPPINES Lindbergh I

CHAIR: Damon Woods, University of California, Irvine

The Filipino-Comprador Bourgeoisie and American Imperialism
Elizabeth Pastores-Palfy, The Union Institute

Was America a Civilizing Empire?: The McKinley-Taft Era in Colonial Philippines
Priscilla Tacujan, Claremont Graduate University

Benevolent Assimilation Askew: The 1922 "Craig Incident" at the University of the Philippines
Barbara Gaerlan, University of California, Los Angeles

DISCUSSANT: Damon Woods

Panel 41 THE RAMAYANA ACROSS THE CURRICULUM Lindbergh II

CHAIR: Shiva Bajpai, California State University, Northridge

Literature

Teri Shaffer Yamada, California State University, Long Beach

Art

Robert Brown, University of California, Los Angeles

Music and Dance

Hari Har Rao, Music Circle

History and Geography

Shiva Bajpai

DISCUSSION: The Audience

Panel 42 WAR AND SOCIETY IN SOUTH ASIA Earhart

CHAIR: Anand Yang, University of Utah

*Men Without Hats: The Vellore Mutiny, Military Fashion, and the Changing
Disciplinary System of the Madras Army, 1806-1807*
James Hoover, University of Wisconsin, Madison

*Further Reflections on Regulating Sex, Regulating Soldiers:
Colonialism and Sexuality in the First World War*
Philippa Levine, University of Southern California

Propaganda and the Raj: British "Spin Control" in America in WWII
Arnold P. Kaminsky, California State University, Long Beach

DISCUSSANT: Anand Yang

Panel 43 HISTORY AND ART IN THAILAND Post

CHAIR: Cedric A. Sampson, South Bay Community College District

The Forgotten Year: The Politics of King Narai's Accession to the Throne of Ayutthaya
John Listopad, Stanford University

Treasures of Wat Ratchanburana: Interpretation and Study
M.L. Pattaratorn Chirapravati, Asian Art Museum of San Francisco

DISCUSSANT: Anthony Reid, University of California, Los Angeles

Panel 44 JING, BUDDHA, AND PUPPETRY: CHINESE TRADITION AS A SIGNIFYING PRACTICE Daugherty

CHAIR: Dian Li, University of Arizona

*Yin Shun and the Formation of Buddhist Doctrines:
The Development of Religious Ideology in the Mid-Twentieth Century*
Scott Hurley, University of Arizona

Jing: Canon, Scripture or Penetrating Hermeneutic?
Jerry Keys, University of Chicago

The Puppet as Man: Zhang Yimou's Cinematic Discourse on Life in the Film, "To Live"
Wensheng Wang, University of Arizona

DISCUSSANT: Dian Li

Panel 45 TWENTIETH CENTURY CHINESE LITERATURE: CRITICAL ANALYSIS Rickenbacker

CHAIR: Vivian-Lee Nyitray, University of California, Riverside

Lao She and Nostalgia for Traditional Chinese Society
William Lyell, Stanford University

Old Shanghai's Splendor from Xue Puchao to Eileen Chang
Fengying Ming, Whittier College

A Case of Successful Failure: Reading Wang Wen-hsing's "Dragon Inn"
Steven Riep, University of California, Los Angeles

DISCUSSANT: Hsin-Sheng C.Kao, California State University, Long Beach

CHAIR: Yoko Pusavat, California State University, Long Beach

Political/Socio-/Psycholinguistic Issues

Kimi Kondo, University of Hawaii at Manoa
 Yasuko Koshiyama, California State University, Long Beach
 Hitomi Oketani-Lobbezoo, Eastern Michigan University
 Setsue Shibata, California State University, Fullerton

BREAK**10:40-10:50am**

CHAIR: Anthony Reid, University of California, Los Angeles

An organizational meeting of Southeast Asian Studies Centers and individuals
 interested in establishing a Consortium for Southeast Asian Studies for event
 and resource sharing in Southern California.

CHAIR: John N. Tsuchida, California State University, Long Beach

PANELISTS:

Maulana Karenga, California State University, Long Beach
 Francine Curtis, California History-Social Studies Project/Long Beach Unified School District
 Him S. Chhim, Cambodian Association of America
 Mark Elinson, Los Angeles Unified School District/Monroe High School
 Ignatius Ding, Global Alliance
 Donald Schwartz, California State University, Long Beach/Woodrow Wilson High School

DISCUSSION: The Audience

CHAIR: Teresa Wright, California State University, Long Beach

Domestic Factors in the Taiwan Issue: Taiwan's Democratization and China's Marketization
 Hiroki Takeuchi, University of California, Los Angeles

Taiwan Baseball and a Globalized Taiwan Identity
 Andrew Morris, California State University, San Luis Obispo

*Modeling the Individual Bribery Behavior: A Case Study
 in the Taiwan 1996 Presidential Election*
 Ding-Ming Wang, Diwan University (Taiwan)

DISCUSSANT: Teresa Wright

Panel 50

**BUDDHIST TRANSFORMATIONS: AJANTA,
SIGIRIYA, AND DUNHUANG**

Post

CHAIR: David L. Kamansky, Pacific Asia Museum

Dunhuang Caves 419 & 420: Indian and Central Asia Influences in Style and Content
Janet Baker, Phoenix Art Museum

Murals of Ajanta Rock-cut Caves of India and Sigiriya-Damballa Complex of Sri Lanka
Ananda W. P. Guruge, Hsi Lai University

DISCUSSANT: David L. Kamansky

Panel 51

A PASSAGE TO INDIA VIA FILM

Daugherty

CHAIR: Darius Cooper, San Diego Mesa College

Ritwik Ghatak-Between the Messianic and the Material
Pravina Cooper, University of California, Los Angeles

Satyajit Ray's Alien: Agantu K
Narasimha P. Sil, Western Oregon University

"The Menace of Nationalism": Rabindranath Tagore's The Home and the World-Fiction and Film
Gautam Kundu, Georgia State University

DISCUSSANT: Darius Cooper

Panel 52

HELEN FOSTER SNOW: A DOCUMENTARY

Rickenbacker

CHAIR: Eric A. Hyer, Brigham Young University

A preview of an upcoming PBS special. Helen Foster Snow, wife of Edgar Snow, lived in China from 1931 to 1940. She spent time in Yenan, wrote about China, and was a central figure in the organization of the Industrial Coops in China.

Panel 53

**SYMPOSIUM ON HERITAGE JAPANESE
EDUCATION RESEARCH (PART III)**

Salon E

CHAIR: Yasuko Koshiyama, California State University, Long Beach

Curriculum/Assessment Pedagogy

Masako Douglas, University of California, Los Angeles
Hiroko Furuyama, Japan Foundation Language Center
Toshiko Kishimoto, Clemson University
Nariyo Kono, University of Arizona
Kazuko Nakajima, University of Toronto

LUNCH BREAK

12:00 Noon-1:00pm

**SATURDAY, OCTOBER 7th
SESSION IX**

1:00-2:30pm

Panel 54

**NATIONALISM AND GENDER IN EARLY 20TH
CENTURY CHINA**

Lindbergh I

CHAIR: Linda Pomerantz, California State University, Dominguez Hills

Women's Education and State Building in Late Qing China
Xioping Cong, University of California, Los Angeles

*"Women's Work" and the "Prosperous Nation":
Gender, Labor and Patriotism in Shanghai, 1900-1919*
Constance Orliski, California State University, Bakersfield

Mobilizing Women for the Nation: Female Societies in Early Twentieth-Century Beijing
Weikun Cheng, California State University, Chico

Dressed Like a Man, Speaking as a Woman: Qiu Jin's Play on Gender and Genre
Eileen J. Cheng, University of California, Los Angeles

DISCUSSANT: Charlotte Furth, University of Southern California
Linda Pomerantz

Panel 55

**THE INFUSION OF SOUTHEAST ASIA INTO THE
K-12 CURRICULUM: A NEH PROJECT (ROUNDTABLE)**

Lindbergh II

CHAIR: Robert R. Reed, University of California, Berkeley

PANELISTS:

Alison M. Kaminsky, Long Beach Unified School District (LBUSD)
Sharon Kemmer, Rodgers Middle School, LBUSD
Paul Jenkins, Rodgers Middle School, LBUSD
Patrick Gillogly, Stephens Middle School, LBUSD
Clara Spence, Robert A. Millikan High School, LBUSD
Bari Stevens-Chapman, Hughes Middle School, LBUSD

DISCUSSION: The Audience

**ASIAN AMERICAN STUDIES: LOCALIZING
NARRATIVES/LOCALIZING COMMUNITIES**

Earhart

CHAIR: ChorSwang Ngin, California State University, Los Angeles

A Magazine for Whom? A Critical Analysis of Giant Robot
Rachel Matsuda-Hager, California State University, Long Beach

*Chinatown in the 1900-1924 Periodicals-Not a Chinese Settlement
But an American Perception of an Oriental Ghetto*
Shirley Tam, Editor, *Chinese Christians for Justice*

Little Saigon and the Controversy Over the Westminster Vietnam War Memorial
Jessica Breitenicher, University of California, Los Angeles

DISCUSSANT: Dean Toji, California State University, Long Beach

FILM AND GENDER IN EAST ASIA

Post

CHAIR: Miriam Silverberg, University of California, Los Angeles

*The Male Gaze and Female Body in the Korean Cinema of the 60s:
Scopophobia and the Spectacle Women*
Eunsun Cho, University of Southern California

The Chinese Fever in Recent Hollywood Films
Vivian Shen, Davidson College

*Korean Comfort Women Trilogy as Subaltern Autobiography:
"The Murmuring," "Habitual Sadness," and "My Own Breathing"*
Hye Seung Chung, University of California, Los Angeles

DISCUSSANT: Julie Lee, California State University, Long Beach

**CONTINGENT NATIONALISM: CHINESE AND
JAPANESE WOMEN IN A TRANSNATIONAL CONTEXT**

Daugherty

CHAIR: Sharon Sievers, California State University, Long Beach

*For the Sake of Sound Community Development:
Japanese "Picture Brides" in California, 1906-1920*
Rumi Yasutake, University of California, Los Angeles

"Pan-Pan Girls" under the U.S. Occupation in Japan
Michiko Takeuchi, California State University, Long Beach

Women's Anti-War Efforts in the Emigrants' Community in Guangdong, 1938-1945
Xiaolan Bao, California State University, Long Beach

DISCUSSANT: Sharon Sievers

**VISAS & VIRTUES: CHIUNE "SEMPO" SUGIHARA
AND MORAL COURAGE DURING THE HALOCAUST**

Rickenbacker

MODERATOR: John N. Tsuchida, California State University, Long Beach

COMMENTARY: Igor Kotler, Shoah Institute

Screening and discussion of the Academy Award winning feature film, *Visas & Virtues*, the story of Chiune "Sempo" Sugihara, Japanese Vice-Consul to Lithuania in 1940, whose bravery and courage in issuing visas contrary to orders saved 6,000 lives. The short documentary explores the moral and professional dilemmas of a Japanese diplomat faced with the sight of hundreds of Jewish refugees, and the personal and professional costs of his actions for himself and his family.

DISCUSSION: The Audience

**SYMPOSIUM ON HERITAGE JAPANESE
LANGUAGE EDUCATION RESEARCH (PART IV)**

Salon E

CO-CHAIRS: Hiroko Kataoka and Yoko Pusavat, California State University, Long Beach

Concluding Session and Summary

BREAK

2:30-2:40pm

Panel 61 **THE STRUCTURE OF JAPANESE SOCIETY,
BUREAUCRACY AND POLITICS** Lindbergh I

CHAIR: Robert Uriu, University of California, Irvine

New Trends of Japanese Conservatism
Guangyu Zhang, Beijing University

Japanese Bureaucracy and Gender-Sensitive Policies: Through or Around?
Sue Ellen Charlton, Colorado State University

The Difference in the Philosophy of Heaven Between China and Japan
Luping Liu, National Niigata University

DISCUSSANT: Robert Uriu

Panel 62 **TEACHING ASIAN RELIGIONS (ROUNDTABLE)** Lindbergh II

CHAIR: Christopher Key Chapple, Loyola Marymount University

PANELISTS:

James Fredericks, Loyola Marymount University
Bradley K. Hawkins, California State University, Long Beach
Phyllis K. Herman, California State University, Northridge
Cynthia Humes, Claremont McKenna College

DISCUSSION: The Audience

Panel 63 **ASIANS IN NORTH AMERICA: GLOBAL PERSPECTIVES** Earhart

CHAIR: Elizabeth Labrador, California State University, Long Beach

*The Cartography of "Hongcouver" and the Re(Oriental)ization of
Canadian Immigration Policies in the 1980s and 1990s*
Andrew Yan, University of California, Los Angeles

Transnational Cultures and the Philippines
Randolf Arguelles, University of California, Los Angeles

The Making of Chinese Transnational Identities along the Arizona-Sonora Borderlands
Grace Delgado, California State University, Long Beach

DISCUSSANT: Rachel Lee, University of California, Los Angeles

CHAIR: Sue Needham, California State University, Dominguez Hills

Education

Moury Ouk, California State University, Long Beach

The Arts

Sophiline Cheam Shapiro, University of California, Los Angeles

Religious Practices

Venerable Kong Chhean, Wat Khemara Buddhikaram
Mary Blatz, Mount Carmel Cambodian Center

Social Welfare

Sereivuth Prak, United Cambodian Community
Karen Quintiliani, University of California, Los Angeles

DISCUSSION: The Audience

**MARTIAL LAW IN THE PHILIPPINES (1972)
AND ANTI-MARTIAL LAW ACTIVISM IN
THE UNITED STATES (ROUNDTABLE)**

CHAIR: Carol Ojeda-Kimbrough, University of California, Los Angeles

Anti-Martial Law Alliance (AMLA)

Carol Ojeda-Kimbrough, University of California, Los Angeles

National Committee for Restoration of Civil Liberties in the Philippines
Esther Soriano, Dispute Resolution Program Grants Administration, Los Angeles County

International Association of Filipino Patriots (IAFP) and Friends of The Filipino People (FFP)
Susan Araneta, Los Angeles County Health Department

*National Committee for the Restoration of Civil Liberties in the
Philippines (NCRCLP) and the Alliance for Philippine Concerns (APC)*
Prosy de la Cruz, California Department of Health Services

Anti-Martial Law Coalition (AMLC)

Joe Lalas, California State University, Dominguez Hills

DISCUSSION: The Audience

CHAIR: Lisa Rofel, University of California, Santa Cruz

Postmodernity as Coloniality: Contesting Cultural Imaginaries in 1990s Hong Kong
Mirana May Szeto, University of California, Los Angeles

"Beautiful Boys": Transnational Visualization of Gay Subjects in Late 1990s Taiwan
Tawei Chi, University of California, Los Angeles

Ethnographic Cinema: Haksæng pugun Sinwi
Kelly Jeong, University of California, Los Angeles

DISCUSSANT: Lisa Rofel

CHAIR: Guy Alitto, University of Chicago

*The Bifurcated Nation: The Nationalist Movement's Agitative
and State-building Agendas during the Northern Expedition*
Michael G. Murdock, Brigham Young University

Joining the Revolution: Land Reform Through the Eyes of Villagers, Zouping, 1945-52
Zhijia Shen, University of Colorado

Reading and Revolution: The Political Economy of Youth Anxiety in the Republican Era
Ling Xiao, Brown University

Gender Confidential: Inscribing New Women's Presence on the Revolution
Ping Fu, University of Colorado

DISCUSSANT: Guy Alitto

Index of Program Participants

(Numbers refer to Panels)

Aall, Ingrid, 3, 9
Acosta-Duprez, Veronica, 34
Aiken, Rebecca B., 19
Alitto, Guy, 67
Araneta, Susan, 65
Arguelles, Randolph, 63
Armijo-Hussein, Jacqueline, 38

Bajpai, Shiva, 41
Baker, Janet, 50
Bao, Xiaolan, 58
Barrett, Richard, 34
Bassani, Cherylynn, 10
Berton, Peter, 28
Blatz, Mary, 64
Bodiford, William, 32
Bolton, Christopher, 5
Breiteneicher, Jessica, 56
Broughton, Jeffrey, 2
Brown, Kendall H., 16
Brown, Robert, 41
Butler, Marcia A., 20

Cary, Cavarlee, 25, 33
Chapple, Christopher Key, 62
Charlton, Sue Ellen, 61
Chawla, Sudershan, 21
Chen, Jianyue, 14
Chen, Tse-Mei, 11
Chen, Ya-chen, 5
Cheng, Eileen J., 54
Cheng, Weikun, 54
Chern, Meei-Hwa, 9
Chhean, Kong, 64
Chhim, Him S., 48
Chi, Tawei, 66
Chirapravati, M.L. Pattaratorn, 43
Chiu-Duke, Josephine, 18
Cho, Eunsun, 57
Choi, Hyaewol, 27
Chua, Frank, 11
Chung, Hye Seung, 57
Colingo, Luis Ma. R., 11
Cong, Ziaoping, 54
Conlon, Frank, 22
Cooper, Darius, 51
Cooper, Pravina, 51
Curtis, Francine, 48

D'Amicantonio, John, 19
De La Cruz, Prosy, 65
Deb, Alok, 24

Del Casino, Vincent, 24
Delgado, Grace, 63
Detels, Roger, 24
Ding, Ignatius, 8, 48
Dinh, Ha Thu, 24
Dix, Monika, 2
Domingo, Nenita Pambid, 7, 38
Douglas, Masako, 26, 53
Duke, Michael S., 18
Dutton, George, 29
Duus, Peter, Presidential Address

Elinson, Mark, 48
Elliot, David, 28
España-Maram, Linda, 7

Frank, Anne, 19
Fredericks, James, 62
Fu, Ping, 67
Fukuchi, Isamu, 31
Furth, Charlotte, 54
Furuyama, Hiroko, 26, 53

Gaerlan, Barbara, 40
Gillooly, Patrick, 55
Goble, Andrew, 32
Goodwin, Janet R., 32
Gunitlake, Sarath, 34
Guruge, Andrew W.P., 50

Han, Yong-sup, 28
Harrington, Gordon, 13
Harris, Sheldon, 8
Hawkins, Bradley K., 38, 62
Hegland, Mary, 6
Heim, Steven, 1
Herman, Phyllis K., 62
Hibbets, Maria, 1
Hirose, Stacey, 17
Hoang, Haco, 29
Hoffert, Brian, 23
Hoover, James, 42
Hsu, Kylie, 15
Hsu, Shih-shang, Calligrapher
Humes, Cynthia, 62
Hurley, Scott, 44
Hyar, Eric A., 52

Inui, Lloyd, 21
Itagaki, Lisa Michie, 4
Itagaki, Lynn Mie, 4

Index of Program Participants

(Numbers refer to Panels)

Jenkins, Paul, 55
 Jeong, Kelly, 66
 Ji, Guoping, 24
 Joeck, Neil, 28

Kahn, B. Winston, 13
 Kamansky, David L., 50
 Kaminsky, Alison M., 35, 55
 Kaminsky, Arnold P., Conference Chair, 42
 Kao, Hsin-Sheng C., 45
 Karenga, Maulana, 48
 Karl, David J., 28
 Kataoka, Hiroko, 26, 60
 Kawaguchi, Gary, 17
 Kemmer, Sharon, 55
 Kemp, Karen, 25
 Keys, Jerry, 44
 Kim, Ariel, 15
 Kim, Jae-Cheol, 13
 Kim, Joy, 12
 Kim, Yonhi, 8
 King, Gail, 12
 Kishimoto, Toshiko, 26, 53
 Kjellberg, Paul, 31
 Kobayashi, Yoshie, 61
 Kondo, Kimi, 26, 46
 Kono, Nariyo, 26, 53
 Koo, Eun-Hee, 36
 Koshiyama, Yasuko, 17, 26, 46, 53
 Kotler, Igor, 59
 Kundu, Gautam, 51

Labrador, Elizabeth, 63
 Lalas, Joe, 65
 Lee, Julie, 57
 Lee, Rachel, 63
 Lee, Steven, 36
 Lee, Susan, 3
 Levine, Marilyn A., 25, 35
 Levine, Philippa, 27, 42
 Levine, Steven I., 35
 Lewis, Greg, 30
 Li, Dian, 44
 Li, San-pao, Coord. Calligraphy Exhibit
 Lin, Tsung-Cheng, 23
 Listopad, John, 43
 Liu, Luping, 61
 Liu, Xun, 3
 Ly, Boreth, 33
 Lyell, William, 45

MacKinnon, Stephen R., 14, 20

Mah, Kai-Ho, 39
 Marsot, Alain G., 29
 Matsuda-Hager, Rachel, 56
 Matsumoto, Hiroshi, 15
 McCallum, Donald, 16
 Ming, Fengying, 45
 Minohara, Tosh, 21
 Mita, Takanori, 10
 Miyazaki, Akira, 10
 Mostern, Ruth, 25
 Mosk, Carl, 11
 Murdock, Michael G., 67

Nakajima, Kazuko, 26, 53
 Needham, Sue, 64
 Nelson, John, 25
 Ness, Brenda, 6
 Ng, ChorSwang, 56
 Novotny, Adrian, 39
 Nyitray, Vivian-Lee, 45

Ojeda-Kimbrough, Carol, 65
 Oketani-Lobbezoo, Hitomi, 17, 26, 46
 Okubo, Yuko, 10
 Olson, Emilie, 6
 Orliski, Constance, 54
 Ostrom, Richard, 9
 Ouk, Moury, 64

Pan, Da'an, 34
 Pao Tao, Chia-lin, 18
 Park, Bradley, 31
 Parker, Joe, 32
 Pastores-Palfy, Elizabeth, 7, 40
 Paynter, Robyn A., 19
 Peacock, Sunita, 37
 Pham, Cao Duong, 29
 Phan-Nhu-Hien, L.H., 29
 Phim, Toni Samantha, 33
 Pomerantz, Linda, 54
 Porter, Jonathan, 14
 Powell, William, 25
 Prabhu, Josheph, 1
 Prak, Sereivuth, 64
 Pusavat, Yoko, 26, 46, 60

Quinter, David, 2
 Quintiliani, Karen, 64

Raby, Namika, 37
 Ragsdale, Kathryn, 10
 Raman, Sita Anantha, 6

Index of Program Participants

(Numbers refer to Panels)

Rao, Hari Har, 41
 Reed, Robert R., 55
 Reid, Anthony, 43, 47
 Reynolds, E. Bruce, 14
 Riep, Steven, 45
 Riono, Pandu, 24
 Ritenour, Perry, 13
 Rofel, Lisa, 66
 Rosen, Stanley, 30
 Rottmann, Allison, 20
 Roy, Ram Mohun, 37

Sakata, Yasuo, 21
 Sampson, Cedric A., 43
 Saphonn, Vonthanak, 24
 SarDesai, Damodar R., 28
 Scheinberg, Seymour, 22
 Schnepf, Otto, 11
 Schwartz, Donald, 48
 Scott, George, 4
 Shapiro, Sophiline Cheam, 33, 64
 Shen, Vivian, 57
 Shen, Zhijia, 12, 67
 Shibata, Setsue, 26, 46
 Shrake, Eunai, 36
 Sievers, Sharon, 58
 Sil, Narasingha P., 51
 Silverberg, Miriam, 57
 Soh, Sarah, 8
 Soriano, Esther, 65
 Spence, Clara, 55
 Srinivas, Lakshmi, 37
 Stevens-Chapman, Bari, 55
 Stupler, Harvey, 3
 Sturman, Rachel, 22
 Sugimoto, Michael, 39
 Sun, Shaoyi, 30
 Sun, Teresa Chi-Ching, 23
 Szeto, Mirana May, 66

Tacujan, Priscilla, 7, 40
 Takeuchi, Hiroki, 49
 Takeuchi, Michiko, 58
 Talamantes, Maria, 38
 Tam, Shirley, 56
 Tan, Terpsi, 36
 Tanaka, Rokuo, 5
 Tang, Paul, 31
 Teshima, Taeko, 39
 Thompson, Mary J., 27
 Tobias, James, 27
 Toji, Dean, 56

Tran, Trangdai, 15
 Tsai, Yuanlin, 38
 Tsuchida, John N., 8, 21, 48, 59

Uriu, Robert, 61

Wang, Ding-Ming, 49
 Wang, Wei, 34
 Wang, Wensheng, 44
 Watson, Robert N., 33
 Webb, Glenn, 17
 Wei, Huiying, 30
 Wei, Shen, 20
 Weir, Edgar A., 31
 Whitehead, Judy, 22
 Williams, Philip F., 18
 Winters, Jeff, Webmaster
 Winther-Tamaki, Bert, 16
 Wolpert, Stanley, 6
 Woods, Damon, 7, 40
 Wright, Teresa, 49
 Wu, Qingyun, 23
 Wu, Yenna, 18

Xiao, Ling, 67
 Xiao, Zhiwei, 9
 Xie, Tim, 15

Yamada, Teri Shaffer, 33, 41
 Yamashita, Samuel, 16
 Yan, Andrew, 63
 Yang, Anand, 42
 Yasutake, Rumi, 58
 Yen, Shu-jen, 15
 Yick, Joseph K.S., 14
 Yocum, Glen, 6
 Yuan, Jing-Dong, 28

Zhang, Guangyu, 61

ASIAN FOLKLORE STUDIES

A SEMI-ANNUAL JOURNAL
COVERING FOLK TRADITIONS
THROUGHOUT ASIA



SELECTED TOPICS FROM VOLUME LIX, 2000:

- TURKEY: The Bone Motif and Lambs in a Turkish Folktale
- INDIA: *KaaLiyaatTam*: The Life History of a Performer and the Development of a Performing Art
- VIETNAM: Traditional Law of the Ede
- CHINA: The Bride Lamentations of Women in Nanhui
- TAIWAN: The Rite of Secondary Burial in South Taiwan
- JAPAN: The Lapidary Sky over Japan

Subscription rates for two issues/year: US \$40.00 (Institutions), US \$22.00 (Individuals)

Address all inquiries to: ASIAN FOLKLORE STUDIES
Nanzan University, 18 Yamazato-cho, Showa-ku
Nagoya, 466-8673 JAPAN
e-mail: nuai@ic.nanzan-u.ac.jp

PHIL'S ANGUS GRILLE

- Award winning Four Star Menu. Serves a wide selection of *Certified Angus Beef and Seafood*. Open 5:00 p.m. to 10:00 p.m. Monday thru Saturday. Reservations highly recommended.

Cafe Terrace

- Elaborate *breakfast buffet, Around the World lunch buffet and Sunday Brunch*, Nightly dinner specials. Dine inside or on our heated patio overlooking the picturesque waterfalls and garden. Open 6:00 a.m. to 11:00 p.m., 7 days a week.

Corrigan's SPORTS BAR AND PATIO

- Watch all major sports events on our multiple big screen T.V.'s. Complementary Hors D'oeuvres 4:00 p.m. to 7:00 p.m. daily. Private parties accepted.

GUEST ROOM FAMILY PACKAGES AVAILABLE

LONG BEACH Marriott.

4700 Airport Plaza Drive, Long Beach, CA 90815

Tel: (562) 425-5210 • Fax: (562) 421-1075

www.marriotthotels.com/lgbib • email: lbmarriotts@aol.com

利文電腦中文

Liwin's CyberChinese

Multimedia Supplement to the Practical Chinese Reader

Revolutionary, interactive software to supplement traditional language instruction and learning. Based on Beijing Language and Cultural University's Practical Chinese Reader textbook. 根据北京语言文化大学《实用汉语课本》改编

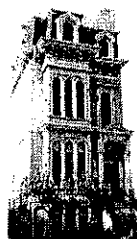
Now Available!

Download your free demo today
(www.liwin.com/cyberchinese)

Liwin, Inc. (tel: 714.523.2043, fax: 714.522.7410)



www.iic.edu



Intercultural Institute of California

1362 Post Street, San Francisco, CA 94109 • Tel: (415) 441-1884 Fax: (415) 885-4155 iic@iic.edu

Fall Semester 2000

Earn a Master of Arts Degree in Korean Studies

**** Online Registration For All Courses ****

Professor Frank Hoffmann, historian and art historian specializing in modern period Korea and a widely published Korea scholar just joined the IIC as a full-time faculty member. He is also the creator of the most popular gateway to Korean Studies on the Internet, now at <http://www.iic.edu/hoffmann/> and *The Harvard Korean Studies Bibliography: 80,000 References on Korea* on CD-ROM. This Fall, Prof. Hoffmann is offering the following Korean studies courses:

- | | |
|--|--|
| K627 Political Art in North and South Korea | K624 Traditional Korean Art: Earliest Period to the End of Chosŏn Period |
| K695 Research Tools and Methods for Koreanists | K740 Reading and Research Seminar for Advanced M.A. Students |
| K605 Korea: From Modernization to Globalization [Online] | |

Professors in Fall 2000 also include Dr. Lenore Kim Blank, U.S.F. Professor (ret.), Dr. Michael Pettid, Visiting Assistant Professor of Korean Literature online from the Academy of Korean Studies in Seoul, and Dr. Ki Joong Song, Professor of Korean Linguistics, Seoul National U. and Dr. Jae Bum Kim, Kyungbuk U. (both Visiting Professors at UC Berkeley). They will be teaching these other Fall courses:

- | | |
|---|-------------------------------------|
| K501-503 Korean Language (Beg., Intermed., Adv.) | K720 Pedagogical Korean Linguistics |
| K704 Classical Korean Literature [Online] | K730a Seminar on Teaching Korean |
| K710 Materials Develop. for Korean Lang. Teaching | K660 Buddhism & Confucianism |

Internet Korean Studies Discussion List

Now hosted by the IIC, this premier Internet meeting ground for 500 Korea scholars is a virtual Who's Who of Korean studies specialists. Membership is free and open to the public. The Korean Studies Discussion List covers a multitude of academic topics -- a "must-see" at (<http://www.iic.edu/thelist/>)

THE ASSOCIATION FOR ASIAN STUDIES

AAS is a scholarly, non-political, and non-profit professional association—the largest society of its kind in the world. Our membership includes scholars, educators, students, and professionals associated with research organizations, foundations, government service, media, business, museums, and similar organizations. One of our major goals is to facilitate contact and exchange of information between scholars and scholarly organizations interested in Asian studies.

ENJOY THE ADVANTAGES OF MEMBERSHIP

As a member, you will enjoy the fellowship and intellectual stimulation of your peers, as well as the following:

- Four issues annually of the *Asian Studies Newsletter*
- Four issues annually of the *Journal of Asian Studies*
- Three issues annually of *Education About Asia*
- Discounts on all other AAS publications
- Reduced registration rate at our Annual Meeting

PLAN NOW FOR THE 2001 ANNUAL MEETING

The 53rd Annual Meeting will be held March 22–25, 2001, at the Chicago Sheraton. Join your colleagues for four days of panel discussions, exhibits, videos, special events, meetings, and fellowship.

FOR FURTHER INFORMATION

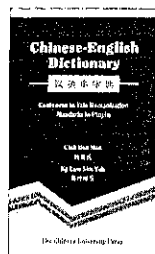
For information on AAS—its publications, membership, annual meeting, or goals and objectives—contact the secretariat at the address below or visit the AAS website.

Association for Asian Studies, Inc.
1021 East Huron Street
Ann Arbor, Michigan 48104 USA
Phone: (734) 665-2490
Fax: (734) 665-3801
Website: www.aasianst.org



The Chinese University Press

Your Chinese Language Course Books



Chinese-English Dictionary

Edited by Chik Hon Man and Ng Lam Sim Yuk

Jointly published with New Asia-Yale-in-China Chinese Language Center, The Chinese University of Hong Kong

Although Chinese-English dictionaries have become increasingly available on the market, one with Cantonese romanizations is still relatively rare. This dictionary is the first of its kind which uses both Cantonese and Mandarin romanizations. It features:

- Over 6,000 most commonly used single-characters
- About 12,000 terms to illustrate the use of the characters
- Definitions in straightforward English
- Yale Cantonese Romanization system and Hanyu Pinyin system for the characters.

2000 172 x 98 mm 624 pages
ISBN 962-201-922-6 Paperback US\$20



A Practical Chinese Grammar
By Samuel Hung-nin Cheung in collaboration with Sze-yun Liu and Li-lin Shih
US\$32



Interesting Cantonese Colloquial Expressions
By Lo Wood-wai and Tam Fao-yin
US\$25



A Guide to Proper Usage of Spoken Chinese
By Tian Shou-he
US\$16.5 (Book) US\$25 (Tapes)
US\$37 (Book & 2 Audio Tapes x 60 minutes)



A Reader in Post-Cultural Revolution Chinese Literature
Compiled by Vivian Ling
US\$14



中文大學出版社
THE CHINESE UNIVERSITY PRESS

A Learners' Handbook of Modern Chinese Written Expressions

By Yu Feng

This Handbook serves as an introduction to the most important written expressions and classical idiomatic phrases in modern Chinese for students of intermediate and advanced Chinese. The twelve chapters in the first section deal with the common knowledge of written expressions such as grammar, syntax, and vocabulary. Various patterns, phrases, words and their usage are also explained in detail. The second section contains six chapters in which the distinctive features of various sub-types of written expressions, such as news reports, academic treatises, literary description, advertisements, correspondence and other "applied" writings, are introduced.

■ DR. YU FENG is an experienced language teacher and has been a preceptor of Chinese at Harvard University since 1995.

2000 260 x 184 mm 180 pages
ISBN 962-201-868-8 Paperback US\$18



Fifty Patterns of Modern Chinese
By Han Dezhil
US\$26



Advanced Chinese Reader
Compiled and annotated by Tien-yi Li and Richard F. Chang
US\$25

BOOKS FROM ISEAS

<http://www.iseas.edu.sg/pub.html>

China's Dilemma: The Taiwan Issue

Sheng Lijian

981-230-076-7 Soft cover Forthcoming 2000
981-230-077-5 Hard cover Forthcoming 2000

Nationalism & Globalization: East & West

Leo Suryadinata, editor

981-230-073-2 Soft cover US\$29.90
981-230-078-3 Hard cover US\$43.90

Southeast Asian Perspectives on Security

Derek da Cunha, editor

981-230-098-8 Hard cover US\$45.90

Southeast Asian Affairs 2000

981-230-095-3 Soft cover US\$24.90
981-230-096-1 Hard cover US\$36.90

Megacities, Labour, and Communications

Toh Thian Ser, editor

981-3055-98-7 Soft cover US\$24.90
981-3055-97-9 Hard cover US\$35.90

Health and Wealth in Vietnam: An Analysis of Household Living Standards

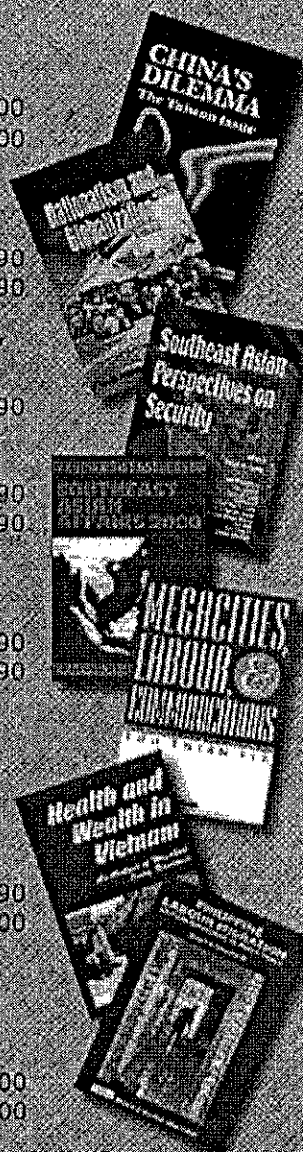
Dominique Haughton, Jonathan Haughton, Sarah Balés, Truong Thi Kim Chuyen, and Nguyen Nguyet Nga, editors

981-230-032-5 Soft cover US\$18.90
981-230-033-3 Hard cover US\$32.00

Philippine Labour Migration: Critical Dimensions of Public Policy

Joaquin Gonzalez, III

981-3055-83-9 Soft cover US\$25.00
981-230-011-2 Hard cover US\$36.00



For orders and enquiries, contact:
ISEAS INSTITUTE OF SOUTHEAST ASIAN STUDIES

30 Heng Mu Keng Terrace, Pasir Panjang, Singapore 119614
Tel: (65) 8702-474 Fax: (65) 7756-259 E-mail: pubsunit@iseas.edu.sg

The Chinese University of Hong Kong, Sha Tin, N.T., Hong Kong Tel.: (852) 2609 6508
Fax: (852) 2603 7355 E-mail: cup@cuhk.edu.hk Web site: <http://www.cuhk.edu.hk/cupress>

ASIAN SURVEY

Vol. XL, No. 2, March/April 2000

HAGEN KOO • The Dilemmas of Empowered Labor in Korea: Korean Workers in the Face of Global Capitalism

GERALD A. McBEATH • Restructuring Government in Taiwan

XIAOMING HUANG • Managing Fluctuations in U.S.-China Relations: World Politics, National Priorities, and Policy Leadership

WU XINBO • The Security Dimension of Sino-Japanese Relations: Warily Watching One Another

ANUPAM SRIVASTAVA • India's Growing Missile Ambitions: Assessing the Technical and Strategic Dimensions

J. ENKHTSAIKHAN • Mongolia's Nuclear-Weapon-Free Status

SHIPING TANG • Economic Integration in Central Asia: The Russian and Chinese Relationship

PHILIP ANDREWS-SPEED AND SERGEI VINOGRADOV • China's Involvement in Central Asian Petroleum: Convergent or Divergent Interests?

Subscribe today to save 15% on new subscriptions to Asian Survey

Please start my subscription to
Asian Survey.

- ☐ Individual: ~~\$64~~ **\$54.40**
☐ Student (w/ID): ~~\$38~~ **\$32.30**
☐ Institution: ~~\$180~~ **\$127.50**

Two convenient ways to pay:

☐ Check enclosed

(payable to UC Regents/Asian Survey)

☐ Visa ☐ MasterCard

Card No. _____

Exp. date _____

Signature _____

Name _____

Address _____

City _____ State _____ Zip _____

Send orders to: University of California Press, Journals Division,
2000 Center Street, Suite 301, Berkeley, CA 94704-1223
E-mail: jorders@ucpress.ucop.edu • www.ucpress.edu/journals

ASTWCAS

Fujii Enterprises, Inc.



Joe Yuzuru Fujii

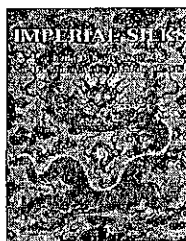
10841 Santa Rosa Road Camarillo, Calif. 93012
Tel: (805) 491-0310 Fax (805) 491-1107

**YANASE LANDSCAPING
AND NURSERY**

Robert Yanase

17723 Prairie Ave. Torrance, Calif. 90504
Tel: (310) 371-0501 Fax: (310) 370-4443

NEW PUBLICATIONS



IMPERIAL SILKS Ch'ing Dynasty Textiles in The Minneapolis Institute of Arts (2 Volumes) Robert D. Jacobsen
9.75 x 13.5", 2 Volumes, 1184 pp., 592 objects illustrated, 270 color and 330 b/w illustrations, hardcover, slipcase, Minneapolis, 2000.
This two-volume book is a long-awaited catalogue of the collection of Ch'ing dynasty imperial textiles and costumes from the collection of The Minneapolis Institute of Arts. Consisting of over 600 items, it is considered one of the finest and most comprehensive holdings of Ch'ing textiles outside of China. An essential reference on the subject.

\$195.00 (2 Volumes)

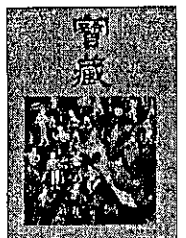
Item #12937



CAOYUAN GUIBAO: NEIMENGGU WENWU KAOGU JINGCUI Treasures on Grassland: Archaeological Finds from Inner Mongolia Autonomous Region Shanghai Museum of Art
10.2 x 12.2", 275 pp., over 200 objects illustrated in color, text in Chinese and English, softcover, Shanghai, 2000.
Catalogue of the largest exhibition of treasures from Inner Mongolia at the Shanghai Museum featuring over 200 artifacts, including jade, painted pottery, gold, bronze and metalwares, and other items from the Xiongnu, Xianbei, and Qidan cultures.

\$65.00

Item #14587



PRECIOUS DEPOSITS Historical Relics of Tibet (5 Volumes) Jia Yang & WANG Mingxing
English text edited by Terese Bartholomew
These five magnificent volumes introduce the history and culture of Tibet from the Paleolithic Age to the 1940s through over 700 precious cultural relics. It is divided chronologically into five volumes, covering arts, architecture, cultures, politics, military affairs, religions, science, technology, trade and business, transportation, social life, etc. Each volume has many special topics with a brief essay that provides information about important events and cultural features in the related period.

8.75 x 11.5", 5 Volumes:

Volume 1: Prehistoric Age and Tubo Period

225 pp, 132 objects illustrated in color

Volume 2: The Period of Separatist Regimes

327 pp, 201 objects illustrated in color

Volume 3: Yuan Dynasty and Ming Dynasty

317 pp, 118 objects illustrated in color

Volume 4: Qing Dynasty

277 pp, 125 objects illustrated in color

Volume 5: Qing Dynasty and the Republic of China

245 pp, 138 objects illustrated in color

all text in English, hardcover, Beijing, 2000.

SPECIAL OFFER \$45.00 off \$295.00 list price,

plus free limited edition slipcase, \$35.00 value!

US\$250.00 (5 Volumes) Item #13227

Chinese Edition, BAO CANG, is also available, Item #13226



www.paragonbook.com

To order, visit our web site or call **1-800-55-BOOKS**

Paragon Book Gallery

1507 South Michigan Avenue, Chicago, IL 60605

Tel: 312-663-5155 Fax: 312-663-5177

Email: paragon@paragonbook.com

COUNCIL IN ASIA

www.ciee.org/study

Foreign Exchange Student Programs

Peking University **BEIJING**

Nanjing University **NANJING**

Fudan University **SHANGHAI**

National Chengchi University **TAIPEI**

Council-International Study Programs

633 Third Avenue, 20th Floor

New York, NY 10017-6706

tel: 1 800 40 STUDY

fax: 1 212 822 2779

e mail: studyinfo@ciee.org

Council Study Abroad

CIIEE Council on International Educational Exchange

NE



Plan Ahead

WCAAS 2001



October 5-6, 2001

hosted by
The University of Montana, Missoula